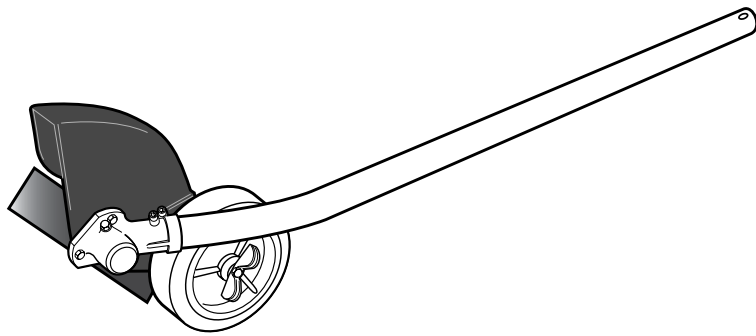


SHINDAIWA OWNER'S/OPERATOR'S MANUAL

MULTIPURPOSE EDGER TOOL 65010



WARNING!

Minimize the risk of injury to yourself and others!
Read this manual and familiarize yourself with the
contents. Always wear eye and hearing protection
when operating this unit.

Introduction

The Multipurpose Edger Tool has been designed and built to deliver superior performance and reliability without compromise to quality, comfort, safety or durability.

As an owner/operator, you'll soon discover for yourself why Shindaiwa is simply in a class by itself!

While every attempt has been made to provide the latest information about your Shindaiwa product, there may be some differences between your attachment and what is described here.

ECHO, Inc. reserves the right to make changes to products without prior notice, and without obligation to make alterations to units previously manufactured.

IMPORTANT!

The information contained in these instructions describes units available at the time of publication.

Contents


	PAGE		PAGE		PAGE
Attention Statements	2	Specifications	5	Maintenance	8
Safety	3	Assembly	6	Troubleshooting Guide	11
Product Description	5	Using a Hand-Held Edger.....	8		

IMPORTANT!

The operational procedures described in this manual are intended to help you get the most from this unit as well as to protect you and others from harm. These procedures are guidelines for safe operation under most conditions, and are not intended to replace any safety rules and/or laws that may be in force in your area. If you have questions regarding your Shindaiwa hand held power equipment, or if you do not understand something in this manual, contact your local Shindaiwa dealer for assistance. You may also contact Shindaiwa at the address printed on the back of this Manual.


Attention Statements

Throughout this manual are special "attention statements".



DANGER!

A statement preceded by the triangular attention symbol and the word "DANGER" contains information that should be acted upon to prevent serious injury or death.



WARNING!

A statement preceded by the triangular attention symbol and the word "WARNING" contains information that should be acted upon to prevent serious bodily injury.

IMPORTANT!

A statement preceded by the word "IMPORTANT" is one that possesses special significance.

CAUTION!

A statement preceded by the word "CAUTION" contains information that should be acted upon to prevent mechanical damage.

NOTE:

A statement preceded by the word "NOTE" contains information that is handy to know and may make your job easier.

International Symbols



Keep bystanders at least 50 feet (15 m) away during operation.



Beware of thrown or ricocheted objects.



Keep feet away from blade. Rotating blade may cause injury. Blade may continue to rotate after the unit is shut off.

Safety

This machine operates at very high speeds and has the potential to do serious damage if misused, abused or mishandled. To reduce the risk of injury, you must maintain control at all times, and observe all safety precautions during operation. Never permit a person without training or instruction to operate this machine!

NOTE:

For specific maintenance and safety information about your Multipurpose Tool Carrier, consult the owner's manual provided with it. If it has been lost or misplaced, contact a Shindaiwa dealer for a replacement.

Operating Precautions



WARNING!

Use Good Judgement

This Shindaiwa edger tool is specifically designed for use on the Shindaiwa Multipurpose Tool Carrier. Installation and/or use on any other model, brand or type of power tool is not approved by Shindaiwa. Attempts to use on non-approved models can damage the equipment and cause accidents, serious injury or death.

ALWAYS make sure the Multipurpose Edger Tool is properly installed and firmly tightened before operation.

NEVER use a cracked or warped cutting attachment: replace it with a serviceable one and make sure it fits properly

Before starting the engine, make sure the cutting attachment is not contacting anything.

ALWAYS stop the engine immediately and check for damage if you strike a foreign object or if the machine becomes tangled. Do not operate with broken or damaged equipment.

NEVER transport the machine or set it down with the engine running. An engine that's running could be accidentally accelerated causing the cutting attachment to rotate.

ALWAYS stop the engine immediately if it suddenly begins to vibrate or shake. Inspect for broken, missing or improperly installed parts or attachments.

ALWAYS keep a Solid Stance. Maintain footing and balance at all times. Do not stand on slippery, uneven or unstable surfaces. Do not work in odd positions or on ladders. Do not over reach.

Operating the Multipurpose Edger Tool

Always wear a hard hat to reduce the risk of head injuries during operation of this machine.

ALWAYS protect yourself from hazards such as thorny brush and flying debris by wearing gloves and close fitting clothing that covers arms and legs. Never wear shorts. Don't wear loose clothing or items such as jewelry that could get caught in machinery or underbrush. Secure long hair so it is above shoulder level.

Keep a proper footing and do not overreach—maintain your balance at all times during operation.

Wear sturdy footwear with nonslip soles to provide good footing. Steel-toed safety boots are recommended. Never operate unit bare-footed!



Always wear eye protection such as goggles or safety glasses. Wear hearing protection devices and a broad-brimmed hat or helmet.

Always operate with both hands firmly gripping the unit.

Keep away from rotating attachments at all times, and NEVER lift a moving attachment above waist-height.

Always make sure the appropriate cutting attachment shield is correctly installed and in good condition.

Avoid long-term operation in very hot or very cold weather.

Be extremely careful of slippery terrain, especially during rainy weather.

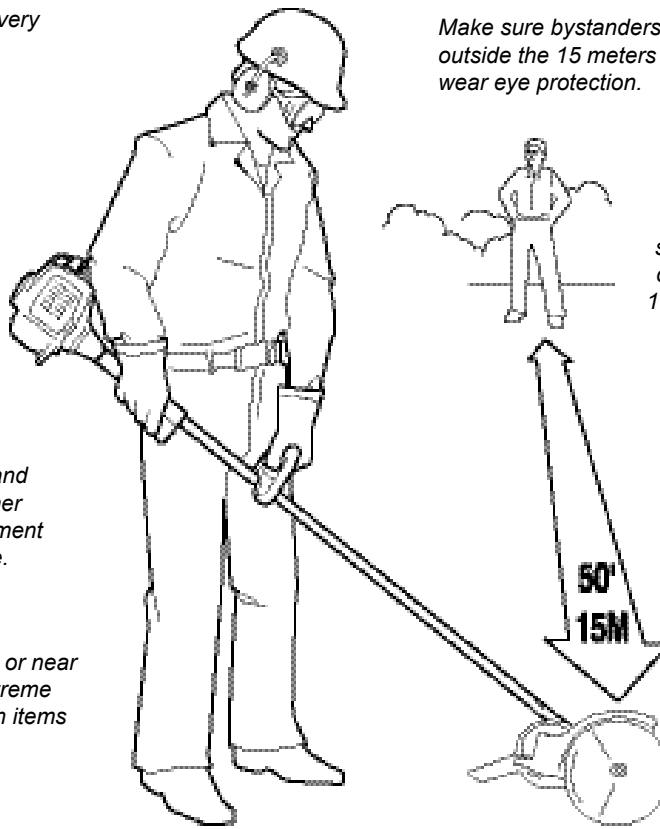
Be constantly alert for objects and debris that could be thrown either from the rotating cutting attachment or bounced from a hard surface.

When operating in rocky terrain or near electric wires or fences, use extreme caution to avoid contacting such items with the cutting attachment.

Make sure bystanders or observers outside the 15 meters "danger zone" wear eye protection.

Reduce the risk of bystanders being struck by flying debris. Make sure no one is within 15 meters—that's about 16 paces—of an operating attachment.

If contact is made with a hard object, stop the engine and inspect the cutting attachment for damage.



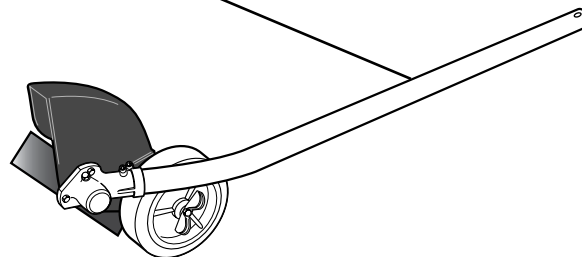
Safety Labels



IMPORTANT!

Safety and Information Labels: Make sure all safety and information labels are undamaged, readable and up to date. Immediately replace damaged or missing labels.

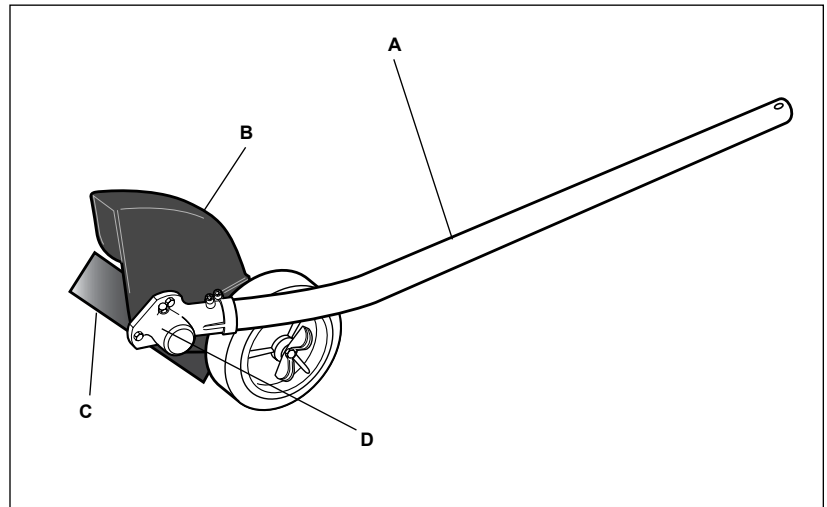
New labels are available through your local authorized Shindaiwa dealer.



Product Description

Using the illustration as a guide, familiarize yourself with your machine and its various components. Understanding your machine helps ensure top performance, long service life and safer operation.

- A - Outer tube
- B - Cutting attachment shield
- C - Edger blade
- D - Gearcase



WARNING!

Do not make unauthorized modifications or alterations to this unit or its components.

Specifications

Length/Weight/Height	793 x 171 x 299 mm (31.2 x 6.7 x 11.8 in)
Multipurpose Edger Tool (less cutting attachment)	1.98 kg (4.4 lb)
Gearcase Lubrication	Lithium based grease
Gear Reduction	1.36:1
Gearcase Arbor Bolt Size	8 mm Left-hand thread

Specifications are subject to change without notice.

Prior to assembly

Before assembling, make sure you have all the components required for a complete unit:

- Shaft/Gearcase Assembly
- Shield/Wheel Assembly

- Edger Blade
- Operator's Manual
- Assembly Tool (s)

Carefully inspect all components for damage.

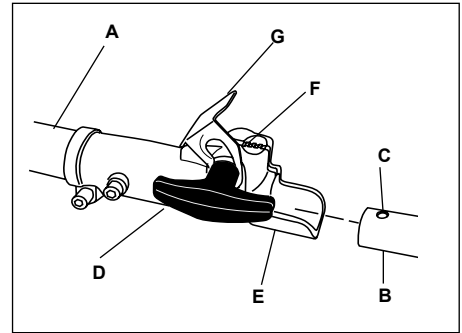
IMPORTANT!

The terms "left", "left-hand", and "LH"; "right", "right-hand", and "RH"; "front" and "rear" refer to directions as viewed by the operator during normal operation.

Assembly

Installing a Tool Attachment

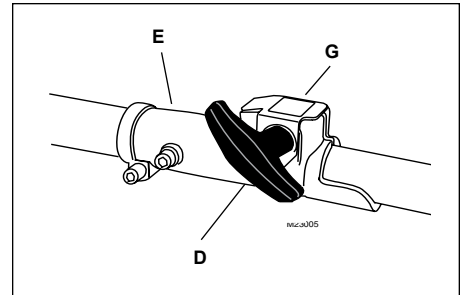
1. Place the Multipurpose Tool Carrier (A) and the Tool Assembly (B) on a clean, flat surface so that both assemblies fit end to end. The powerhead assembly should be facing up, and the tool assembly should be positioned with the locking hole in the tube (C) end facing up.



CAUTION!

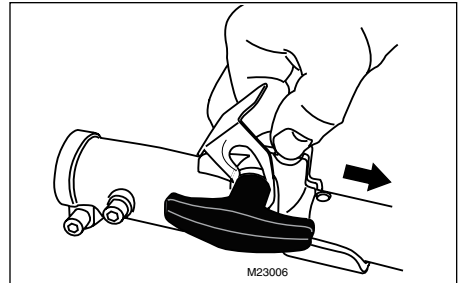
Keep the open ends of the tubes clean and free of Debris!

2. Slip off the protective cover from the end of the tool, and loosen the coupler screw knob (D).
3. Insert the tool assembly into the coupler (E), with the tool decal facing up, until the line of the decal is flush with the end of the coupler. Twist the tool back and forth until you are sure it snaps in place by the coupler latch (F).
4. When the two tube halves are locked together, press down on the spring-loaded latch protector (G) and tighten the coupler screw knob.



Disassembling The Pole Sections

1. Place the Multipurpose Tool Carrier and the Tool Assembly on a clean, flat surface, loosen the coupler screw knob (D). The spring-loaded coupler protector (G) should pop up.
2. Press down on the latch (F) with your finger or thumb. This releases the coupler latch.
3. Pull the tool assembly (B) out of the coupler (E).



Mount the Cutting Attachment Shield on the Gearcase

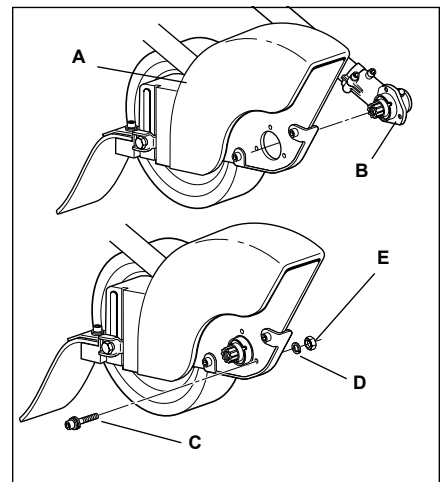
1. Remove the shaft bolt, bolt guard, holder A and holder B from the gearcase.
2. Align the cutting attachment shield assembly (A) with the gearcase as shown, and then fit the shield onto the matching flange (B) on the gearcase.



WARNING!

The edger is intended for right-handed operation only! When correctly assembled, the cutting attachment shield and shaft must be oriented as shown.

3. Install the socket-head screws (C) with washers. Firmly tighten all three screws.
4. Install a washer (D) and nut (E) on each of the three screws assembled in Step 3, then firmly tighten each nut.

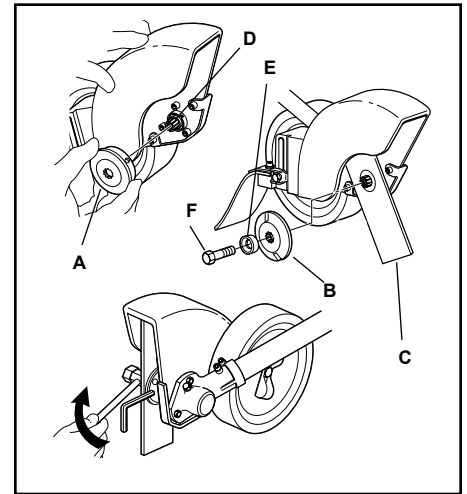


IMPORTANT!

The three socket-head screws must be firmly tightened against the cutting attachment shield before installing and tightening the nuts.

Mount the Edger Blade

1. Install the holder (A) onto the output shaft (D).
2. Mount the edger blade (C) and holder (B) onto the output shaft, and then install the bolt guard (E) and shaft bolt (F) (turn bolt counterclockwise to install).
3. Align the hole in holder (A) with the matched hole in the gearcase, and then use the hex wrench to temporarily lock the output shaft.
4. Firmly tighten the shaft bolt. Remove the hex wrench.



WARNING!

- The edger is designed for use with an edger blade only!
- Never operate the edger without the cutting attachment shield installed and tightly secured!

The Multipurpose Edger Tool should now be completely assembled.

Adjusting blade cutting depth

The edger's depth of cut is controlled by a combination of operator height, blade wear, and the positioning of the edger's guide wheel.

To adjust blade height:

1. Loosen the guide wheel adjusting knob (A).
2. Raise or lower the guide wheel (B) to the desired setting.
3. Tighten the guide wheel adjusting knob firmly.



WARNING!

Use only Shindaiwa replacement edger blades.



WARNING!

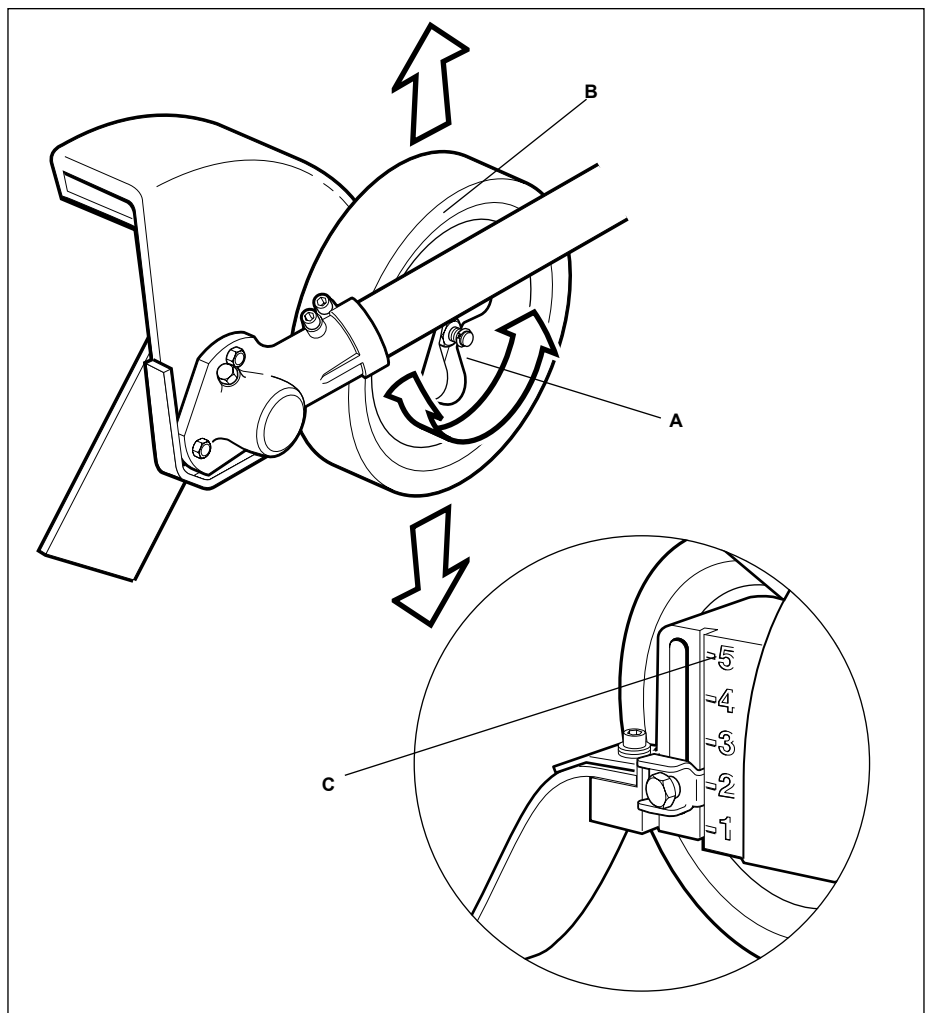
Never adjust the guide wheel while the engine is running.

NOTE:

Guide wheel adjustment is also required to compensate for blade wear.

NOTE:

The numbers (C) are for reference only; they do NOT refer to depth in inches



Using a Hand-Held Edger

Guidelines for Operating the Edger

- Before edging, make sure the area is soft enough so the blade does not bog down. If necessary, water the area before edging.
- Remove debris and other obstacles that could be thrown by the rotating blade.
- Plan your work so the edger blade is always on your right-hand side.
- Begin each pass by positioning the unit over the work, and with the engine running at about half-throttle. Slowly lower the blade to the ground while applying full throttle.

CAUTION!

Low-speed edging can lead to premature clutch failure.

- Do not move the edger into the work so fast that the engine or blade bogs down.

Regular and frequent use of the edger will make a neater lawn, and a frequently trimmed edge will be easier to maintain.



Maintenance

IMPORTANT!

For detailed maintenance information about your Multipurpose Tool Carrier, consult the owner's manual that was provided with it. If it has been lost or misplaced, contact Shindaiwa for a replacement.



WARNING!

Before performing any maintenance, repair, or cleaning work on the unit, make sure the engine and cutting attachment are completely stopped. Disconnect the spark plug wire before performing service or maintenance work.



WARNING!

Non-standard parts may not operate properly with your unit and may cause damage and lead to personal injury.

IMPORTANT

Using non-standard replacement parts could invalidate your Shindaiwa warranty.

Prior to each work day, perform the following:

- Check for loose or missing screws or components. Make sure the cutting attachment is clean, free of debris and securely fastened.
- Check the entire machine for leaking fuel or grease.
- Make sure that nuts, bolts, and screws (except carburetor adjusting screws) are tight.

Edger Blades

Check the edger blades condition frequently. If an edger blade's performance changes suddenly, stop the engine and check the blade for cracks or other damage. Replace a damaged edger blade IMMEDIATELY!



WARNING!

- Never repair a damaged edger blade by welding, straightening or by modifying its shape. An altered edger blade may break during operation, resulting in serious personal injury.
- The Multipurpose Edger Tool is designed for use with a single, bar-type blade only.
- Blades are not interchangeable between Shindaiwa edgers and brush cutter models. Operating any machine with a blade or attachment not approved for that unit can be hazardous and may cause serious injury.

50-hour Maintenance

Gearcase lubrication

- Remove the shaft bolt (A), bolt guard (B), holder A (C), blade (D), holder B (E), and the output shaft collar (F). Press new grease into the gearcase (G) until the old grease has been pushed out. Use only lithium-base grease.

Lubricate the Flexible Shaft

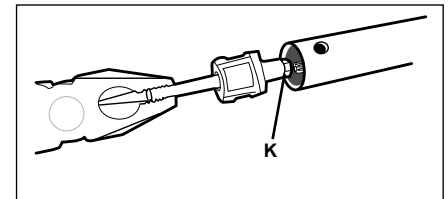
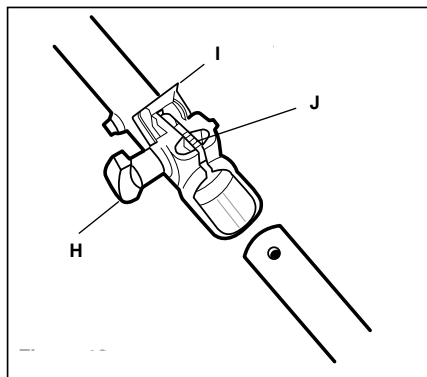
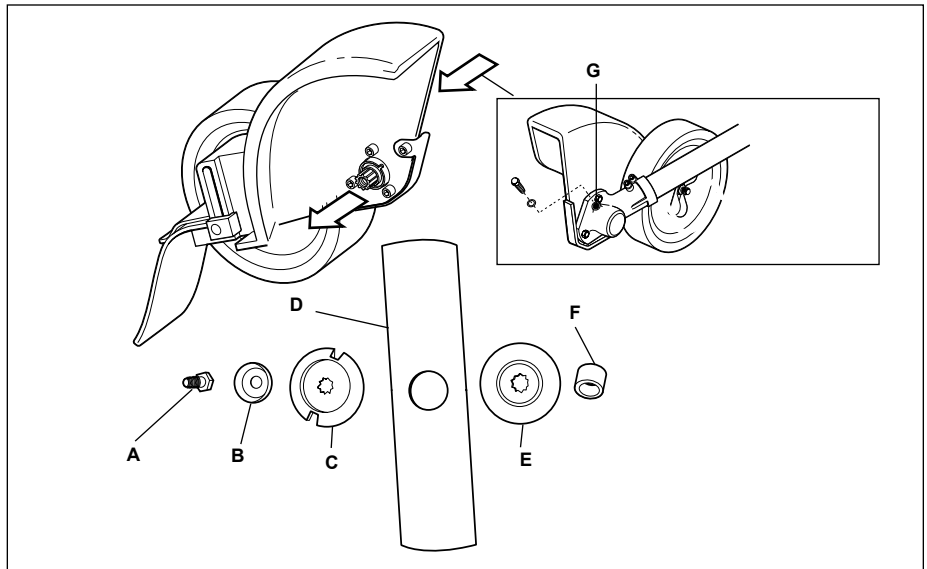
Lack of lubrication will cause rapid wear to the flexible shaft and also to the shaft tube liner, resulting in increased vibration and greatly decreased service life. Remove and lubricate the flexible shaft as follows:

1. With the unit on a clean, flat surface, loosen the coupler screw knob (H). The spring-loaded coupler protector (I) should pop up.
2. Press down on the latch (J) with your finger or thumb. This releases the coupler lock.
3. Pull the tool assembly out of the coupler.
4. Pull the flexible shaft and bushing (K) from the shaft tube assembly.

NOTE:

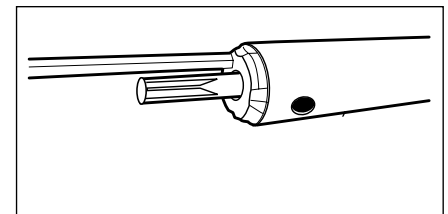
For extended shaft life, the flexible cable should be reversed end-for-end during the reinstallation process.

5. Clean the shaft thoroughly in solvent and dry with a clean shop towel.



8. Reinstall the bushing. Push it into the outer tube until it bottoms against the collar on the flexible shaft.

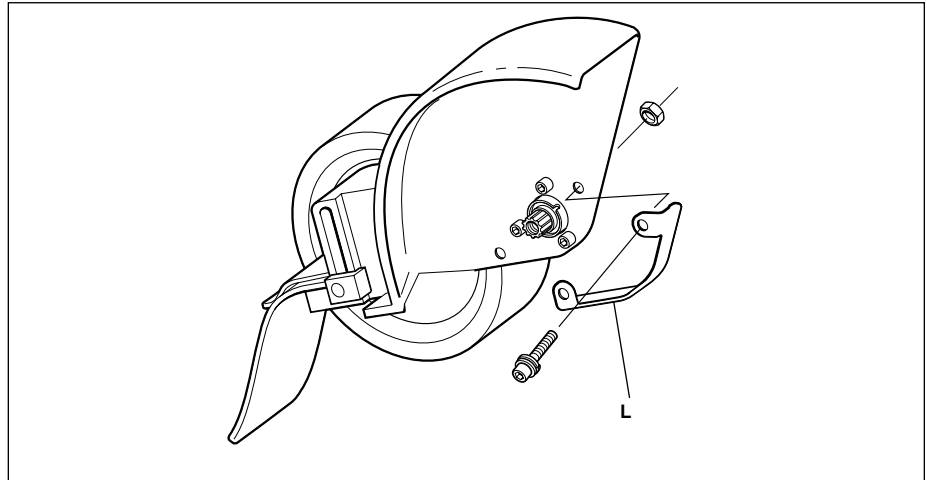
6. Coat the entire length of the shaft with lithium-base grease.
7. Reinstall the flexible shaft.



Inspect the Gearcase Protector

The metal gearcase protector (L) is installed to protect the gearcase flange from damage when working close to sidewalks or other abrasive surfaces, and should be routinely inspected for damage or excessive wear.

When replacing the protector, inspect to be sure that both of the protector mounting screws are firmly tightened and each screw is locked in place with a nut as shown.



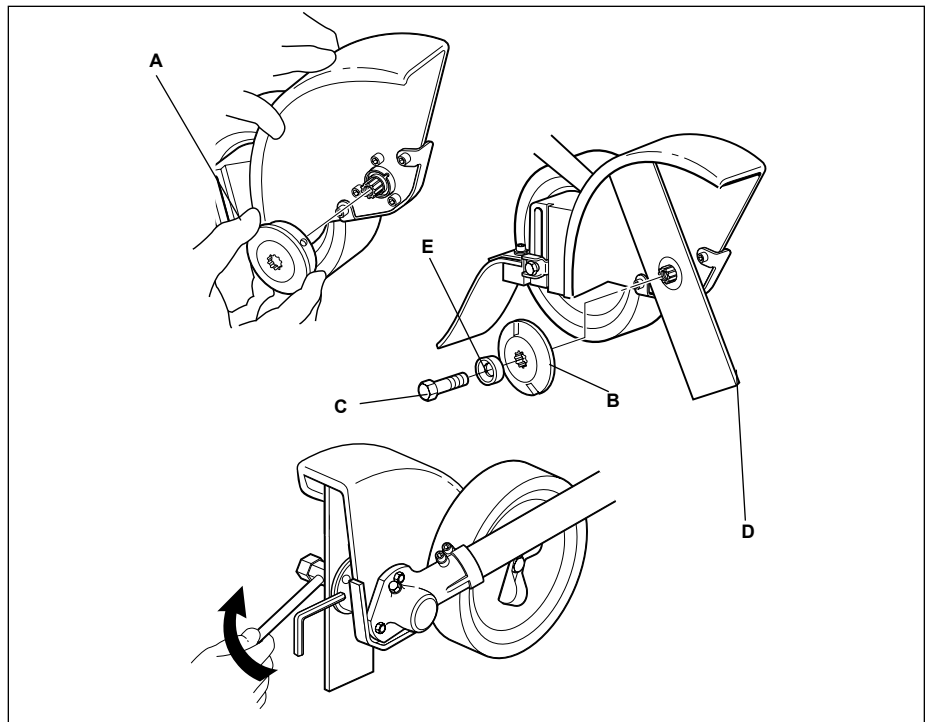
Replacing the edger blade



WARNING!

Always wear gloves when handling the edger blade.

1. Align the hole in holder A (A) with the matching hole in the gearcase and then use a hex wrench to temporarily lock the output shaft.
2. Loosen the shaft bolt then remove the output shaft bolt (C), Holder B (B) and the edger blade (D) from the gearcase.
3. Mount the edger blade and holder B (B) onto the shaft, and then install the bolt guard (E) and shaft bolt (turn bolt counterclockwise to install).
4. Align the hole in holder A (A) with the matching hole in the gearcase, and then use a hex wrench to temporarily lock the output shaft.
5. Firmly tighten the shaft bolt. Remove the hex wrench.



Troubleshooting Guide

ADDITIONAL PROBLEMS

Symptom	Possible Cause	Remedy
Excessive vibration.	Warped or damaged attachment. Loose gearcase. Bent main shaft/worn or damaged bushings.	Inspect and replace attachment as required. Tighten gearcase securely. Inspect and replace as necessary.
Cutting attachment will not move.	Shaft not installed in powerhead or gearcase. Broken shaft. Damaged gearcase.	Inspect and reinstall as required. Consult with an authorized Shindaiwa servicing dealer.
Cutting attachment moves at engine idle.	Engine idle too high. Broken clutch spring or worn clutch spring boss.	Adjust idle. Check Specifications page for correct idle speed. Replace spring/shoes as required, check idle speed.

Servicing Information

Parts/Serial Number

Genuine Shindaiwa Parts and Assemblies for your Shindaiwa products are available only from an Authorized Shindaiwa Dealer. When you do need to buy parts **always** have the Model Number and Serial Number of the unit with you. You can find these numbers on the engine. For future reference, write them in the space provided below.

Model No. _____ SN. _____

Service

Service of this product during the warranty period must be performed by an Authorized Shindaiwa Service Dealer. For the name and address of the Authorized Shindaiwa Service Dealer nearest you, ask your retailer or call: 1-877-986-7783. Dealer information is also available on WWW.SHINDAIWA.COM. When presenting your unit for Warranty service/repairs, proof of purchase is required.

Consumer Product Support

If you require assistance or have questions concerning the application, operation or maintenance of this product you may call the Shindaiwa Consumer Product Support Department at 1-877-986-7783 from 8:30 am to 4:30 pm (Central Standard Time) Monday through Friday. Before calling, please know the model and serial number of your unit.

Warranty Registration

To ensure trouble free warranty coverage it is important that you register your Shindaiwa equipment by filling out the warranty registration card supplied with your unit. Registering your product confirms your warranty coverage and provides a direct link if we find it necessary to contact you.

Additional or Replacement Manuals

Replacement Operator and Parts Catalogs are available from your Shindaiwa dealer or at WWW.SHINDAIWA.COM or by contacting the Consumer Product Support Department (1-877-986-7783). Always check WWW.SHINDAIWA.COM for updated information.

shindaiwa[®]

ECHO Incorporated.
400 Oakwood Road
Lake Zurich, IL 60047-1564 U.S.A.
Telephone: 1-877-986-7783
Fax: 1-847-540-8416
www.shindaiwa.com

Yamabiko Corporation
7-2 Suehirocho 1-Chome, Ohme,
Tokyo, 198-8760, Japan
Phone: 81-428-32-6118
Fax: 81-428-32-6145