

**SHINDAIWA GRASS TRIMMER TO BLADE CONVERSION
INSTRUCTIONS**

Model 80558 For Trimmer T260, T261



WARNING!

Minimize the risk of injury to yourself and others! Read the Owner's/Operator's manual originally supplied with the unit that is being upgraded and familiarize yourself with the contents. Always wear eye and hearing protection when operating your unit.

Introduction

These are instructions to convert a grass trimmer to a blade capable unit. This is not an Owner's/Operator's manual. Information on how to operate and maintain the unit can be found in the Owner's/Operator's manual for the unit you are converting. Note this kit is supplied with a cutting attachment shield that has been redesigned to provide better visibility and a larger cutting swath when used as a grass trimmer.

IMPORTANT!

If the cutting attachment shield has been removed from your unit or the unit was manufactured prior to October 2001, an additional clamp kit will be required to complete this installation. The clamp kit required is Shindaiwa part number 80292.

IMPORTANT!

The information contained in these instructions describes the product available at the time of publication.

Echo, Inc. reserves the right to make changes to products without prior notice, and without obligation to make alterations to units previously manufactured.

Contents

	PAGE		PAGE
Attention Statements	2	General Safety Instructions	3
Safety Labels	3	Kit Contents	3
		Assembly	4
		Shoulder Strap	8
		Using a Brushcutter Blade	8

Attention Statements

Throughout this manual are special "attention statements".



WARNING!

A statement preceded by the triangular attention symbol and the word "WARNING" contains information that should be acted upon to prevent serious bodily injury.

CAUTION!

A statement preceded by the word "CAUTION" contains information that should be acted upon to prevent mechanical damage.

IMPORTANT!

A statement preceded by the word "IMPORTANT" is one that possesses special significance.

NOTE:

A statement preceded by the word "NOTE" contains information that is handy to know and may make your job easier.

IMPORTANT!

The instructions described in this manual are intended to help you get the most from your Shindaiwa power tool as well as to protect you and others from harm. These procedures are guidelines for safe operation under most conditions, and are not intended to replace any safety rules and/or laws that may be in force in your area. If you have questions regarding your Shindaiwa power tool, or if you do not understand something in these instructions, your Shindaiwa dealer will be glad to assist you. You may also contact Shindaiwa at the address printed on the back of this instructional manual.



Read and follow this operators manual. Failure to do so could result in serious injury.



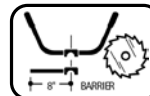
Wear eye and hearing protection at all times during the operation of this unit.



Keep bystanders at least 50 feet (15 m) away during operation.



Beware of thrown or ricocheted objects.



Do not operate this unit with a blade unless the unit is equipped with a Shindaiwa-approved handlebar or barrier.

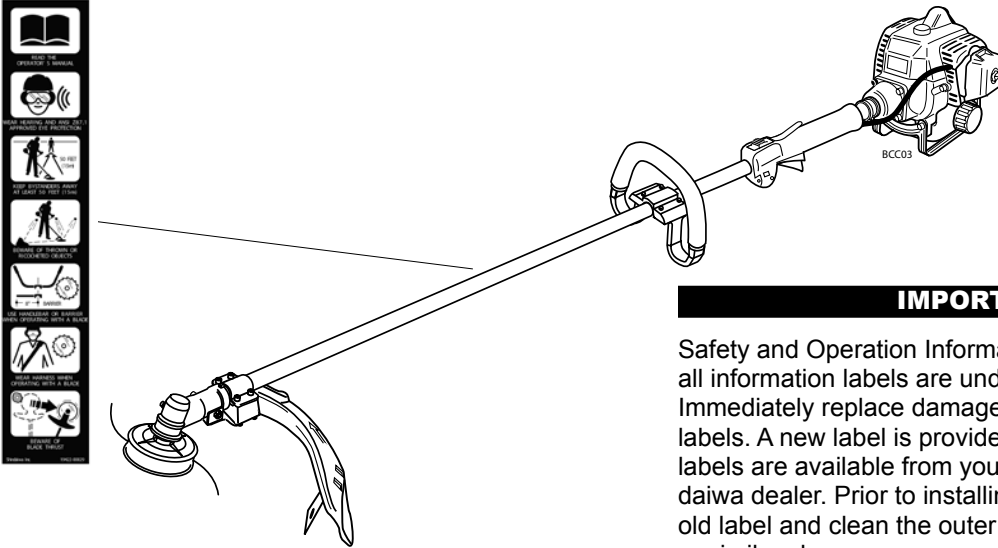


Always wear a harness when operating this unit with a blade. A harness is also recommended when using trimmer line.



If unit is used as a brushcutter, beware of blade thrust. A jammed blade can cause the unit to jerk suddenly and may cause the operator to lose control of the unit.

Safety Labels



IMPORTANT!

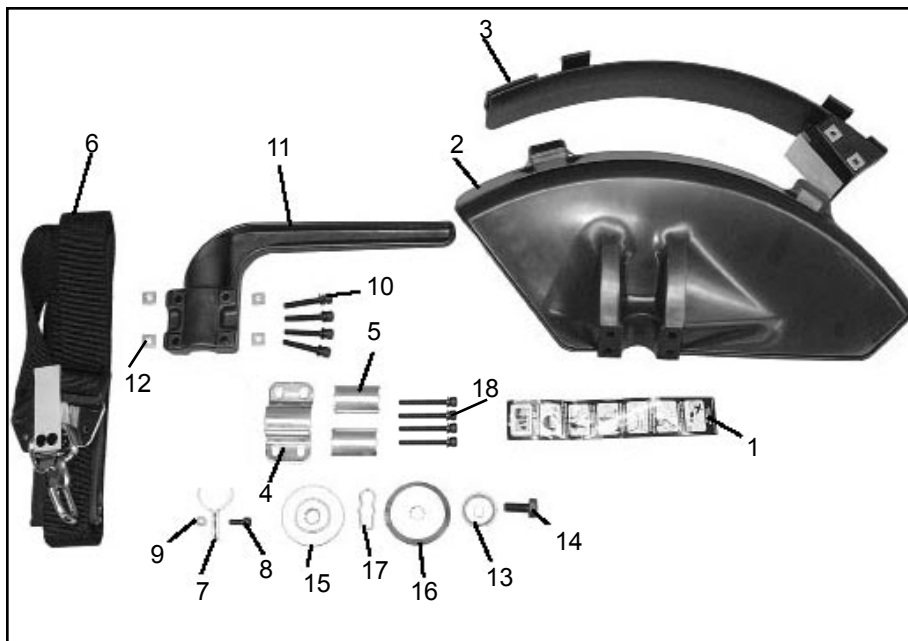
Safety and Operation Information Labels: Make sure all information labels are undamaged and readable. Immediately replace damaged or missing information labels. A new label is provided in this kit and additional labels are available from your local authorized Shin-daiwa dealer. Prior to installing the new label, Remove old label and clean the outer tube with rubbing alcohol or similar cleaner.

General Safety Instructions

WARNING!

- When operating with a blade, make sure the handle is positioned to provide you with maximum protection from contacting the blade. Always make sure the handlebar is installed in accordance with the manufacturer's instruction.
- NEVER** use a cracked or warped blade: If a properly installed blade vibrates, replace it with a new one and re-check.
- ALWAYS** Shut off the engine immediately if a blade binds in a cut. Push the branch or tree to ease the bind and free the blade.
- Beware of a coasting blade when brushcutting or edging. A coasting blade can injure while it continues to spin after the throttle trigger is released or after the engine is stopped.

Kit Contents



#	Description	Qty
1	Warning Label	1
2	Debris Shield	1
3	Debris Shield Extension	1
4	Upper Clamp	1
5	Spacer	2
6	Shoulder Strap	1
7	Hanger	1
8	M5 x 12 mm Socket Head Cap Screw	1
9	M5 Nut	1
10	M5 x 35 mm SPW Bolt	4
11	Barrier Bar	1
12	M5 Nut	4
13	Bolt Guard	1
14	8 x 20 mm SW Bolt	1
15	Holder (A)	1
16	Holder (B)	1
17	Safety Clip	1
18	M5 x 45 mm SPW Bolt	4
19	Assembly Tool (s)	

Assembly

Removing the Old Cutting Attachment Shield

Remove the Existing Cutting Attachment Shield.

1. Remove the four socket-head cap screws, bracket and two shims. See Figure 1.
2. Remove the retaining nut, washer and gearcase clamp screw. If possible, do not disturb the D-washer.
3. Remove the cutting attachment shield from the gearcase.

CAUTION!

The D-Washer is a spacer that prevents overtightening and must remain in place to prevent possible damage to the gearcase clamp.

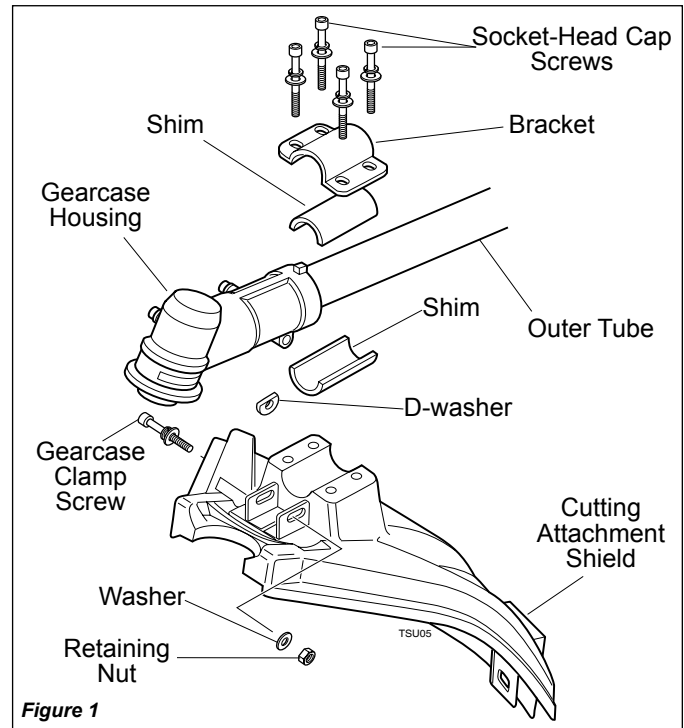


Figure 1

Barrier Bar and Hanger Assembly

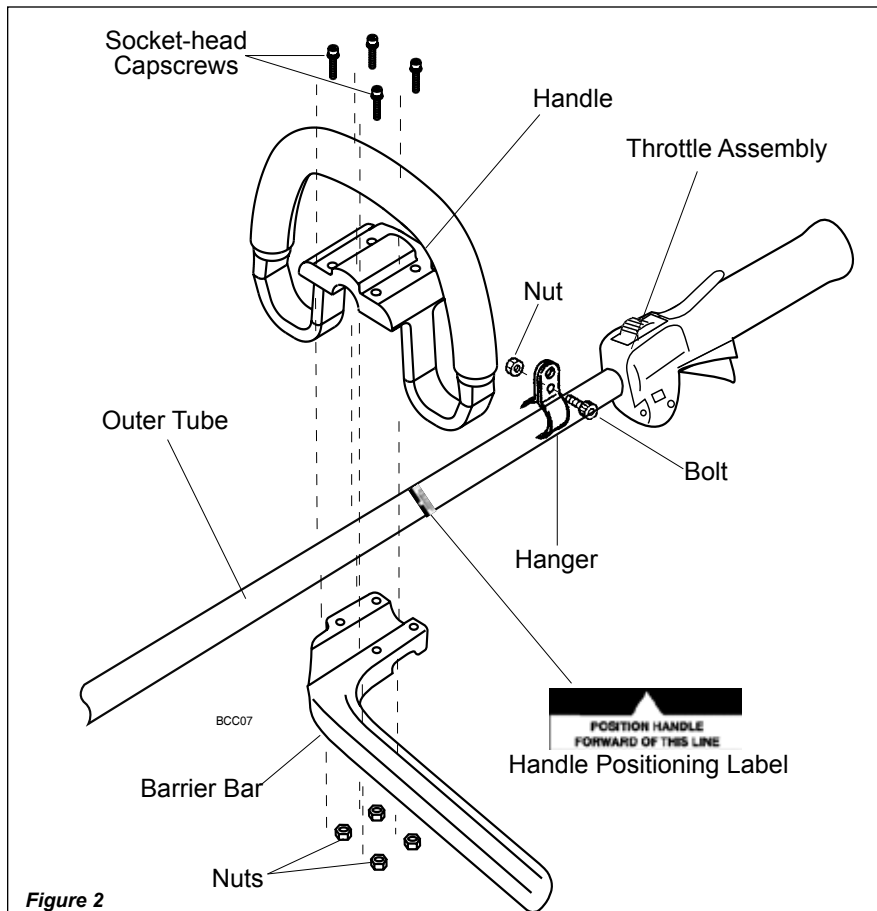


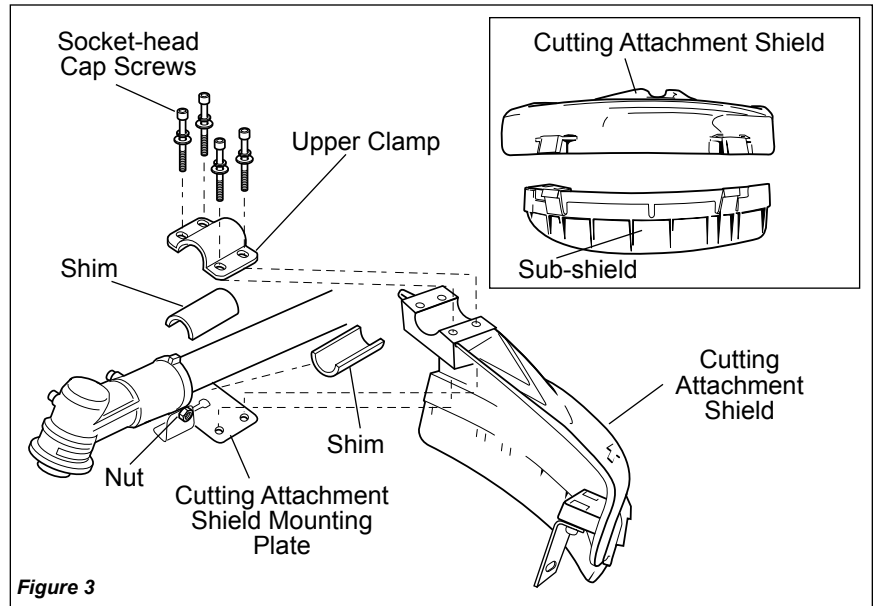
Figure 2

1. Remove the four socket-head cap screws on the handle and remove the handle and mounting bracket.
2. Unscrew gearcase housing locating screw, and slide gearcase off of outer tube.
3. Position the hanger on the outer tube between the handle and throttle assembly and secure the hanger with the nut and bolt as shown in Figure 2.
4. Slide gear case on to outer tube and align locating holes.
5. Thread locating screw into locating hole, and tighten securely.
6. Position the handle on the outer tube forward of Handle Positioning Label as shown in Figure 2.
7. Install the barrier bar with the socket-head cap screws and nuts. Tighten the screws finger-tight ONLY at this time.
8. Locate the handle in the best position for operator comfort (usually about 10 inches ahead of the throttle housing).
9. Secure the handle by alternately tightening the four socket-head screws in a diagonal or "criss-cross" fashion.

New Cutting Attachment Shield

Assemble the Cutting Attachment Shield to the Outer Tube.

1. Attach cutting attachment shield mounting plate to gear case housing using clamp screw, washer, and retaining nut, and tighten finger tight.
2. Make sure that the D-washer is installed in the gear case clamp, flat side facing outer tube.
3. Insert the cutting attachment shield between the outer tube and the cutting attachment mounting plate. See Figure 3.
4. Fit the two shims and the bracket over the outer tube and install the four socket-head cap screws finger tight. See Figure 3.
5. Tighten the gearcase clamp screw and retaining nut.



CAUTION!

Make sure the clamp screw and retaining nut are securely tightened before tightening the four socket head screws.

6. Tighten the four socket-head cap screws to secure the cutting attachment shield.

Sub-Shield.

(when trimmer head is in use)

1. Attach the shield extension to the cutting attachment shield.



WARNING!

NEVER operate the unit without the cutting attachment shield installed and tightly secured!



WARNING!

NEVER use this machine without sub-shield when using a trimmer head.



WARNING!

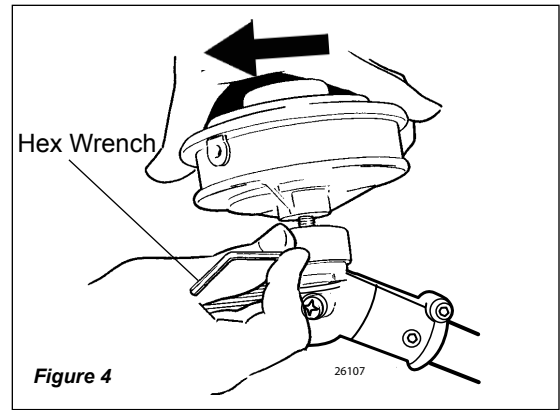
A cutting attachment shield or other protective device is no guarantee of protection against ricochet. YOU MUST ALWAYS GUARD AGAINST FLYING DEBRIS!

CAUTION!

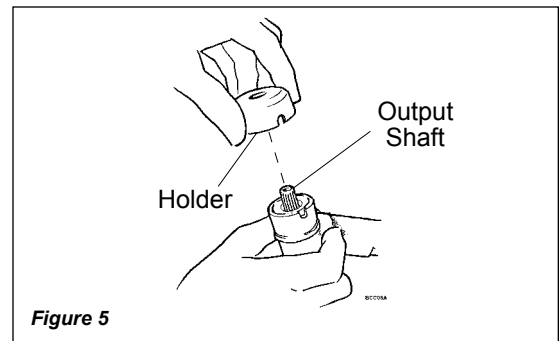
Make sure the sub-guard is completely hooked at the hook receiver.

Install Blade

1. Turn the unit over so that the gearcase output shaft faces UP.
2. Align the hole in the holder with the notch in the gearcase flange, and then temporarily lock the output shaft by inserting a hex wrench through both holes.
3. While holding the hex wrench turn the trimmer head clockwise to remove. Remove trimmer head mounting bolt. Remove the hex wrench. See figure 4.

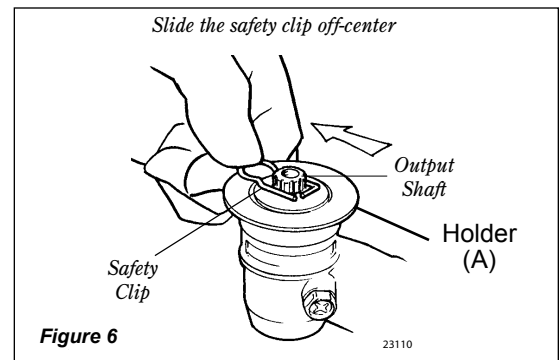


4. Remove and discard the holder. See Figure 5.



5. Install Holder (A) and safety clip. See Figure 6.

6. Next, slide the safety clip off-center. See Figure 6.



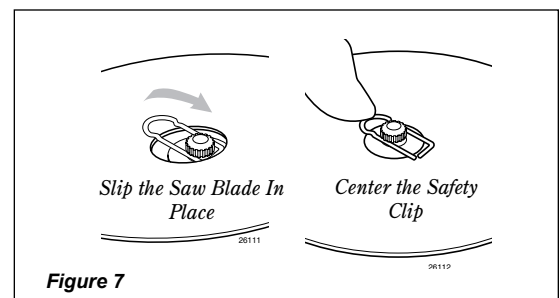
7. Fit the blade over the safety clip and then center it over the flange on Holder (A). See Figure 7.

NOTE:

When installing certain blades, it may be necessary to temporarily remove the safety clip.

CAUTION!

Install the blade so its printed surface is visible to the operator when the brushcutter is in the normal operating position.



**WARNING!**

The blade must fit flat against the holder flange. The blade mounting hole must be centered over the raised boss on blade Holder (A).

- Lock the blade in place by centering the safety clip on the output shaft. See Figure 8.

**WARNING!**

Never operate a unit with a blade without the safety clip in place!

**WARNING!**

A standard grass trimmer unit with loop handle should NEVER be operated with blade-type attachments. For blade use, the trimmer must be fitted with a bicycle-type handlebar or barrier bar that is located in front of the operator to reduce the risk of the operator coming in contact with the cutting attachment. (Per ANSI B175.3). When using a blade, the unit must be equipped with a harness or strap.

**WARNING!**

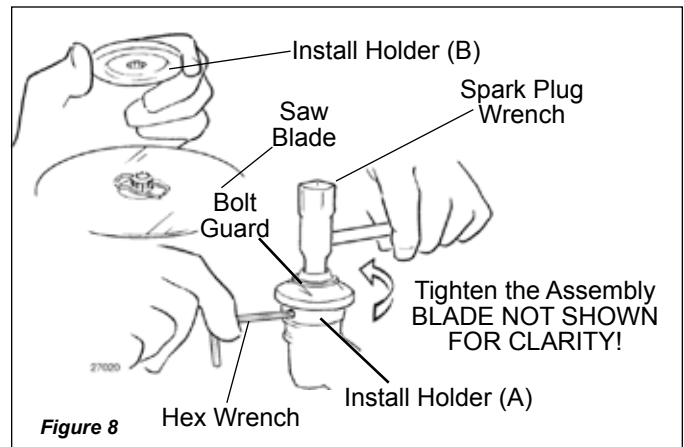
Holder (B) must fit flush against the blade and the splines engaged to the output shaft.

- Install blade Holder (B) on the output shaft. See Figure 8. The recess in the holder must completely cover the safety clip, and must fit tightly against the blade.
- Align the hole in blade Holder (A) with the notch in the gearcase flange, and then lock the output shaft by inserting a hex wrench through both holes.
- Install the bolt guard and then the blade retaining bolt. Using the spark plug wrench, tighten the bolt firmly in a counter-clockwise direction.
- Remove the hex wrench.

The unit should now be completely assembled and ready for use with a blade.

IMPORTANT!

Units with adjustable carburetors must be readjusted for blade use, otherwise serious engine damage can occur.

**WARNING!**

Cutting attachment must not move at idle, otherwise serious injury can result. See "Idle speed adjustment" section in the unit Operator's Manual.

Shoulder Strap

Adjust the shoulder strap so the shoulder pad rests comfortably on the off-side shoulder and the cutting path of the cutting attachment is parallel to the ground. Tighten hanger screw.



WARNING!

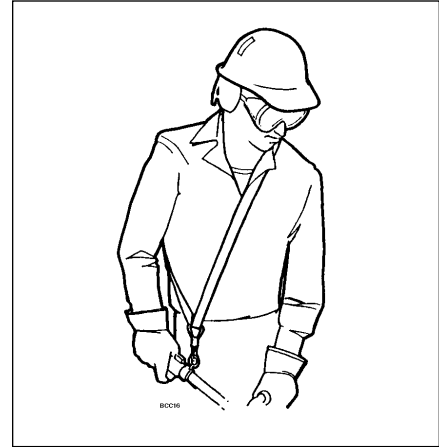
Always wear a shoulder strap when operating this unit with a blade. A shoulder strap is also recommended when using trimmer line.

NOTE:

Using a shoulder strap with a brush-cutter allows you to maintain proper control of the unit and reduces fatigue during extended operation.

NOTE:

Although a shoulder strap accessory is not required for use with a grass trimmer, a shoulder strap can increase operator comfort during extended periods of operation.



Using A Brushcutter Blade



WARNING!

- Before working with a blade-equipped unit, always inspect and clean the area of objects that could interfere with or damage the blade.
- Never use a blade near sidewalks, fence posts, buildings or other objects that could cause injury or damage.
- Never use a blade for purposes other than those for which it was designed.
- Whenever you strike a hard object with a blade, always stop the brushcutter and carefully inspect the blade for damage. **NEVER OPERATE THE UNIT WITH A DAMAGED BLADE!**
- A blade-equipped unit **must** be equipped with a bicycle-type handlebar or barrier as well as a harness or strap.
- Always make sure the cutting attachment shield is properly installed before operating the unit.

Blade Thrust

'Blade thrust' is a sudden sideways or backward motion of the brushcutter. Such motion may occur when the blade jams or catches on an object such as a sapling tree or tree stump. **BE CONSTANTLY ALERT FOR BLADE THRUST AND GUARD AGAINST ITS EFFECTS!**

Barrier Bar

A brushcutter's barrier bar helps prevent the operator from moving forward, or the unit moving rearward, thus preventing inadvertent bodily contact with the blade. **ALWAYS KEEP THE BARRIER BAR SECURELY IN PLACE ON THE UNIT!**

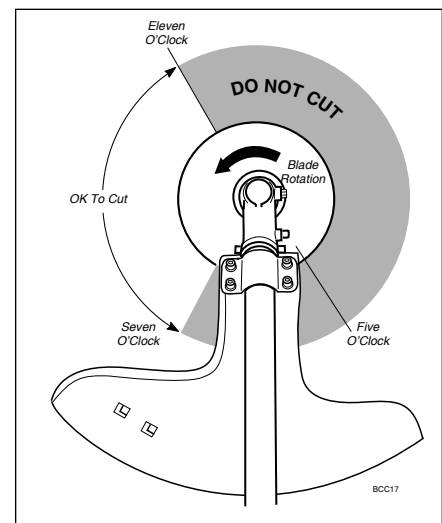
Shoulder Strap or Harness

A shoulder strap or harness provides additional protection against blade thrust. In addition, a shoulder strap or harness gives significant support and comfort to help ensure safe and efficient operation.

When operating a unit equipped with a blade, make sure both the handle/barrier bar and shoulder strap or harness are adjusted to the size of the operator using the unit.

The blade rotates counter-clockwise. For best performance and to minimize being struck by debris, move the blade from right to left while advancing on your work.

Position the blade so cuts are made between the blade's 7 o'clock and 11 o'clock positions (as viewed from above). **DO NOT** cut between the 11 o'clock and 5 o'clock positions (shaded area).



NOTES

Consumer Product Support

If you require assistance or have questions concerning the application, operation or maintenance of this product you may call the Shindaiwa Consumer Product Support Department at 1-877-986-7783 from 8:30 am to 4:30 pm (Central Standard Time) Monday through Friday. Before calling, please know the model and serial number of your unit.

shindaiwa®

ECHO Incorporated.
400 Oakwood Road
Lake Zurich, IL 60047-1564 U.S.A.
Telephone: 1-877-986-7783
Fax: 1-847-540-8416
www.shindaiwa.com

Yamabiko Corporation
7-2 Suehirocho 1-Chome, Ohme,
Tokyo, 198-8760, Japan
Phone: 81-428-32-6118
Fax: 81-428-32-6145